

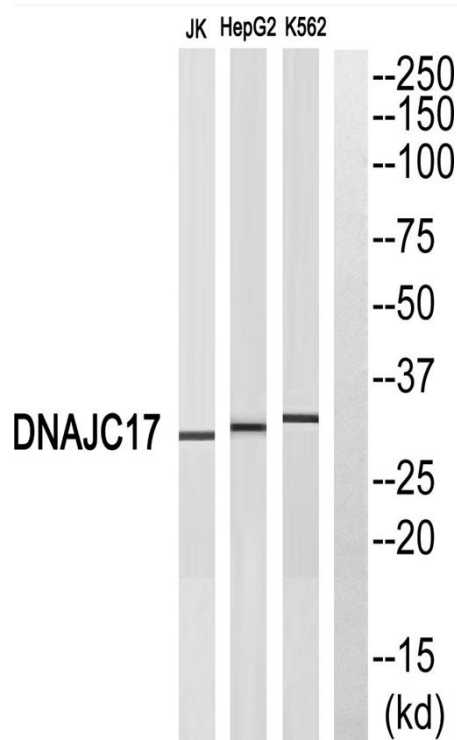


# DnaJC17 Polyclonal Antibody

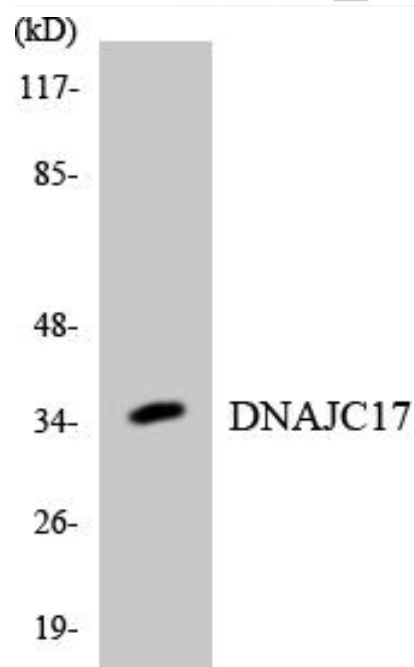
<b>Catalog No</b>	YP-Ab-03817
<b>Isotype</b>	IgG
<b>Reactivity</b>	Human;Mouse
<b>Applications</b>	WB;ELISA
<b>Gene Name</b>	DNAJC17
<b>Protein Name</b>	DnaJ homolog subfamily C member 17
<b>Immunogen</b>	The antiserum was produced against synthesized peptide derived from human DNAJC17. AA range:11-60
<b>Specificity</b>	DnaJC17 Polyclonal Antibody detects endogenous levels of DnaJC17 protein.
<b>Formulation</b>	Liquid in PBS containing 50% glycerol, 0.5% BSA and 0.02% sodium azide.
<b>Source</b>	Polyclonal, Rabbit,IgG
<b>Purification</b>	The antibody was affinity-purified from rabbit antiserum by affinity-chromatography using epitope-specific immunogen.
<b>Dilution</b>	Western Blot: 1/500 - 1/2000. ELISA: 1/20000. Not yet tested in other applications.
<b>Concentration</b>	1 mg/ml
<b>Purity</b>	≥90%
<b>Storage Stability</b>	-20°C/1 year
<b>Synonyms</b>	DNAJC17; DnaJ homolog subfamily C member 17
<b>Observed Band</b>	35kD
<b>Cell Pathway</b>	Cytoplasm . Nucleus . Predominantly nuclear. .
<b>Tissue Specificity</b>	Brain,Epithelium,
<b>Function</b>	similarity:Contains 1 J domain.,similarity:Contains 1 RRM (RNA recognition motif) domain.,
<b>Background</b>	similarity:Contains 1 J domain.,similarity:Contains 1 RRM (RNA recognition motif) domain.,
<b>matters needing attention</b>	Avoid repeated freezing and thawing!
<b>Usage suggestions</b>	This product can be used in immunological reaction related experiments. For more information, please consult technical personnel.



## Products Images



Western blot analysis of DNAJC17 Antibody. The lane on the right is blocked with the DNAJC17 peptide.



Western blot analysis of the lysates from HepG2 cells using DNAJC17 antibody.